

Doug Blanchard
3 Forest Grove
Epping NSW 2121
9868-1103



**Eastwood-Thornleigh
District Tennis Association Inc.**

75 years 75 years 75 years 75 years 75 years 75 years

WELCOME TO OUR 75th BALL

From humble beginnings in 1924, Eastwood-Thornleigh District Tennis Association has grown to become one of the larger associations in the Metropolitan area. In the same period many sporting bodies were being formed, as can be seen by the number of 75th anniversaries celebrated in recent years.

Our Association started with 3 courts at Midson Road and relied on private and outside courts in the early years. Today the Association is in a sound position and has 27 Association courts. There has to be a great thank you to Parramatta, Hornsby and Ryde Councils.

Following the guidelines laid down in the Incorporation Act, in 1984 our Association became Eastwood-Thornleigh District Tennis Association Inc. and now has some 1,700 senior and 700 junior members.

In 1974 we celebrated our 50th Anniversary with a function at North Rocks Community Centre and tonight 30th October, 1999, we are celebrating our 75th Anniversary with a Ball at the Epping Club, which is right in the heartland of our Association.

This booklet is dedicated to all the members of Eastwood-Thornleigh District Tennis Association Inc. throughout the 75 years. The untiring energy of Life members, Council of Managements, Social Secretaries and many more who without them we would not have this fantastic Association So be very proud of what you have achieved.

Please enjoy a snap shot of our 75 years history.

LIFE MEMBERS:

L. Pollard *
A. Peak *
W. Bellamy *
F. Stewart *
M. Willard
A. Gilbert
Mrs. M. Books
S. Hicks
M. Gilbert
E. Gum
Mrs. B. Rickards
Mrs. C. Wagemans

F. Stanford *
F. Watson*
L. Roberts *
Mrs. A. Willard
Mrs. R. Prior
Mrs. M. Gilbert
J. Eyles
P. Randall *
Mrs. A. Johnson
D. Cochrane
T. Nicholson
* deceased.



Some of our Life Members,
S. Hicks, T. Gilbert, E. Gum, Mrs. M. Books,
D. Cochrane and M. R. Gilbert

THE BEGINNING

The first mention of the formation of a community club in this district came in September 1896 when it was reported that a meeting would be held in Harper's Store, Carlingford, to form a tennis club.

Courts, adjoining the tree planted paddock containing Dundas Town Hall, were constructed in 1897 when a working bee that included G T Muir, A Eyles and A D Sellars chipped the temporary courts next to the Town Hall. The Dundas Lawn Tennis Club was born soon after.

About the same time courts were opened by Mr E Terry MP, on the Recreation Club's Grounds at East Carlingford's Park. The completion of the courts was a big event in the community, and the opening was celebrated with a marquee tent being erected with bunting adorning the premises.

Tennis and the number of clubs seemed to be spreading in 1898 when the name Ashburton Tennis Club in Carlingford appeared in the press as being likely to federate with the Pennant Hills Club, whilst the newly formed East Carlingford Recreation Club was reported to be playing matches against Beecroft. A match between East Carlingford Recreation Club and The Treasury is recorded although the result was not.

In 1905, the year after the formation of the Lawn Tennis Association of Australia, Carlingford residents formed a Lawn Tennis Club with two courts erected on the property of Mrs W Shields at the top of Mobbs Hill. The game was destined to thrive in the area.

In the 1890's women in particular, took to tennis which became a very strong factor in the emancipation. At first they wore floppy wide brimmed hats and their flounced and waisted skirts reached to the ankles,

restricting their movement. The men commonly wore straw 'boaters' and blazers. The sport was a winner because it was then one of the few sports involving both sexes.

The Kanordly Court - The Oldest known Club

Note: P Lavistock court, built in 1921, was home of Kanordly Club.



Kandordly Club

In May 1923, Mr K Rost of "Cooperoo", the Honourary Secretary of East Beecroft Tennis Club, advertised a court for hire at "Cooperoo" in Essex Rd, Epping. The advertisement stated that the court was four minutes from the station and could be rented for fifteen shillings (\$1.50), four days a week including Saturday. It was at this time that the Epping and District Hardcourt competition commenced with seven teams:-

Mimosa 1 and 2
Fernhill
Epping Park

Epping P.E.C.
St Phillips

By June 1923 tennis was well established in the area with competition taking place between Epping Lawn Tennis Club and Beecroft. The Mayor of Dundas, Alderman Greenwood, in the presence of local MP's and R B Walker, F Fitzsimmons, and Aldermen Harley, Cook and Mobbs, officially opened the West Epping Recreation Club courts at Midson Road at 3.00 pm on Saturday 17th November, 1923. As was customary in those days, the Ladies' Committee staffed the marquee

providing ice cream and other "goodies". The ground was bright with flags and bunting and music by Hounsell's Orchestra and Eastwood-Epping Band added to the carnival atmosphere.

At that stage the club owned the land with a 399 foot (approx 123 metres) frontage. The cost of this land was three hundred and twenty one pounds (\$642) and worked out at sixteen shillings a foot (approx \$5.60 per metre). It was proposed that the centre would consist of five tennis courts, a six rink bowling green and two playing areas for the children.

Excavation work for the project was carried out by J Bellamy with a limited supply of voluntary labour by Rex Hazlewood, E Wright and L & W Bellamy. David Scott Reserve was named for the man who initiated the West Epping Recreation Club, the members of which proceeded to raise funds for the erection of the proposed tennis courts.

It is recorded that on 13th April, 1928 a tournament was held at the Association Courts in Oxford Street, Epping. The teams involved were: Hurlstone 1 & 2, Thornhill, Dundas 1 & 2, Therris, Armagh, Hillcrest, Hollywood, Rosecot, Methodist Radio, Pines, Telopea, Cheltenham, Mimosa and St Albans. It was also recorded that the President of Ryde Thornleigh Tennis Association on the 29th June, 1928 was J Rowston.

In 1931 Mr J E Rowston advertised for tennis players to fill vacancies in the Association/Club. Cost per quarter for use of courts by members was: Gents 15/- (\$1.50), ladies 10/- (\$1.00). The courts were available every day of the week. July 1932 was a busy month. The Annual Ball was held and Badge teams were playing in the Interdistrict Competition when Blairgowrie (Rex Beveridge and Bonny Bonfield) vs Leichhardt 2. Other teams in the competition were Cheltenham, Killara, Roseville, Hunters Hill. Local players were W Beck, J Pollard, A Jones, C Symes, H Caroyd, K Stanford, F Bailey, N Yates, H Mortimer and A Peak.

Courts in use -

Pomona, Avalon, Verona, Roseville, Glenview, Lavistock, Barelva, Araluen, Theriss, Cressy.

Brush Farm Park

Cheerio, Woodlands, Beieman, Guruga, Welby, Gumnuts, Edgley, Rona, Tremaine, Valley, Weerona, Kelasea, Chesterfield

In 1936 the NSWHTA affiliates participating in the Interdistrict competition were Auburn and Lidcombe; Balmain and District; Berala-Carramar; Blacktown and District; Eastern Suburbs; Eastwood-Thornleigh; Fairfield and District; Homebush-Flemington; Hornsby-Killara; Illawarra Suburbs; Manly and District; NSW Catholic; Northern Suburbs; North Western Suburbs; Parramatta-Granville; Southern Districts; Sydney-Bankstown; Western Suburbs.

It was customary in several associations for there to be no fixed venue for play, and visiting teams had to ring the appropriate home team to find the location. ETDTA fell into this category and visiting teams were asked to phone Mr R B Holliday, Epp.1534.

Manly & District had Association Courts at Balgowlah Park, Balgowlah. Those playing were advised to leave the Spit tram at Wanganella Street and proceed down the hill and the courts were to the left in the park, whilst Illawarra Suburbs advised that their Chapel Street courts were a five minutes walk from Rockdale Station. (Players must have been fitter in those days if they could walk there in five minutes).

There were only four cups, Blackwell, Angus and Coote, Tremlett and D J Ryan. Two rounds were played in each competition. The first round matches consisted of 8 advantage sets of singles only and the second round matches of 8 advantage sets of doubles only. Singles and doubles matches were played home and away and postponed matches

played at the end of the rounds if necessary. In the event of a match being "stopped by stress of weather or failing light, the match shall be resumed from the point at which play ceased at a date and on a ground to be fixed by the Competition Committee." The "Home" team was responsible for the provision of umpires. E.T.D.T.A. had representatives in each of the cups, all in Division 3.

A historic day for E.T.D.T.A. was the 25th February, 1937, when the Trustees of West Epping Recreation Club, George Mortimer and C D Horton contacted Dundas Council in regard to the transfer of tennis court grounds to be dedicated as public reserve in perpetuity, on condition that Council pay the outstanding debt of ninety two pounds six shillings (one hundred and eighty four dollars sixty cents) plus legal fees.

Alderman Horley advised Council that he was one of the original three residents who paid a deposit on the land, which was part of the Mobbs Estate in 1923. The UCV at the time of the transfer to Council was four hundred and twenty seven pounds (eight hundred and fifty four dollars) and the ICV six hundred and forty two pounds (one thousand two hundred and eighty four dollars). Several months later the Dundas Council became official owner of the grounds.

In April 1938 two historic courts in Oxford Street (Tavistock) became building blocks, as did the three built in 1921 by Kanordly Club. The Kanordly Club was the venue for many famous visitors. This included 1933 World Champion, Jack Crawford, Viv McGrath, Enrico Maier, E L Moor, Harry Hopman, Nancy Wynne, Villy Sidwell and Ray Dunlop.

Despite the loss of these courts, tennis still flourished in 1938 with new clubs being formed. Maymyo, Carinya, LMW Rydale, Busy Bees, Goldwyn 1 & 2, Rimelbe 1, Wyralla, Russeldene, Koola, Pembroke, and Girraween.

THE QUEST FOR MORE ASSOCIATION COURTS

During the later part of 1960's the loss of private tennis courts for building blocks began to accelerate, making it imperative that E.T.D.T.A. acquire public courts to augment the three courts at the Wyralla Av. Midson Rd. Centre. For many years attempts were made to obtain suitable land for the building of tennis courts in the Ryde, Parramatta and Hornsby Council areas and these attempts are reported below:-

MOBBS LANE RESERVE EPPING:

The original negotiations with Parramatta City Council reached tentative agreement in 1970, for 9 small tennis courts (100 x 50ft). In 1971 the State Planning Authority rejected the proposal put by the Minister for Local government.

In 1972, the Association put a new proposal to council which required enlargement of the original Western site adjacent Lomax St. This larger area allowed for 5 larger courts (110 x 55ft). Progress from this point on was slow, and during this period other locations were investigated. The Mobbs Lane project was finally abandoned in 1976 when it became apparent that Pennant Hills Park offered much more, and that the Association did not have the resources to develop both areas. Funding arrangements for Mobbs Lane were put in abeyance during negotiations for Santa Rosa and were never finalised. Mobbs Lane has now been developed as park.

WALSH PARK, EASTWOOD:

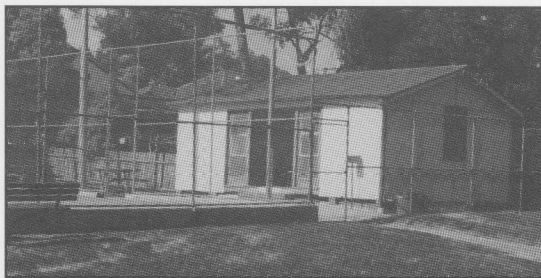
In early 1970 the above park situated between Balaclava Rd. and Welby St. was suggested by Ryde Council as a possible site for a Tennis Centre. This project was dropped when the majority of residents opposed the proposal.

SOMMERVILLE PARK EASTWOOD AND MARSFIELD PARK.

The Councils involved indicated that they would be receptive to approaches by the Association to build courts in these areas. Both sites were investigated but as so few courts could be constructed on each site possible they were considered financially unsuitable from the point of view of management costs.

MIDSON ROAD/WYRALLA AVENUE EPPING

These were the only courts under the control of the Association prior to the opening of The Pennant Hills Park Courts. The main income came from night lettings of No. 1 court. Towards the end of 1973 courts 2 and 3 were illuminated and the existing lighting on court 1 was upgraded. Even before installation work was completed all courts were booked with a lengthy waiting list. The income from the courts increased by more than 200% and this boost to the Associations bank balance was to play a major part in the application for establishment of the Tennis Court Complex at Pennant Hills.



Frank Stewart

Our Association and its development owe a great deal of thanks to the late Frank Stewart who had the foresight, dedication a single minded attitude to make our Association grow and flourish. The development of Juniors was always Fonce's (Frank) first and last thought, because without a good grounding in Juniors then there will be no seniors and no Association. Frank's position was coach/caretaker at Midson Courts.

SANTA ROSA PARK NORTH RYDE:

The park is situated between Bridge Rd and Quarry Rd in North Ryde. In July 1971 the Association made a written application to Council detailing a proposal for a Tennis Centre to be located in Santa Rosa Park and requesting transfer from the Gladesville Football Club. The application also sought Council approval for the construction of the Centre by the Association, in accordance with the preliminary details set out on an accompanying drawing dated 7/7/71.

The Association had only \$12,000 set aside at the time for court construction, but with the high demand for courts prevailing it was considered viable to borrow the extra money. It was judged that this could be paid back well within the 21 year term of the license.

Our rejoicing was short lived, however, as local residents mounted a formidable protest campaign against the proposal. This culminated in a half page Editorial in the Sydney Morning Herald condemning the Association as being a "Private Club making a greedy grab at public parkland" This was followed by the Gladesville Football Club deciding it would like to return to the area, since it discovered its new site was unsuitable.

About the same time the potential for a tennis centre at Pennant Hills was being evaluated and as it promised to be a superior complex, and more viable financially, so the Association decided to put all its efforts into that area and to "soft pedal" the Santa Rosa project. (Santa Rosa Park has since been developed as a football, scouting, and parkland area).

PENNANT HILLS PARK TENNIS COURT COMPLEX:

Late in 1972 the Association became aware of the Pennant Hills Park Sporting Complex which was in its early stages of development by Hornsby Council. Inspection of a possible site for tennis courts revealed

that the area that would accommodate 4 courts had been cleared and roughly levelled. This was the site of the present courts 1 to 4. Council advised the Association late in 1973 that it was agreeable to granting a Licence to the Association to build a small tennis centre of 4 courts and clubhouse on the above area.



Towards the end of these early negotiations came notification that the Softball Association no longer wanted to use 4 softball diamonds which existed at different levels above the proposed tennis courts area. The 2 diamonds nearest Britannia St. were then in temporary use by Netball.



The potential of this extra unwanted area of land for conversion into tennis courts to provide one of the largest and best Tennis Centres in Sydney was immediately apparent to the Association.

Stage 1 of tennis complex enlargement to comprise 8 tennis courts and clubhouse.



Stage 2 would increase the courts to 12.

Stage 3 increased it to 16 courts.

The stabilised loam courts for Stage 1 were brought into service individually, as soon as completed. A picnic area

atmosphere existed for some months with rugs spread out for refreshments in the natural surroundings. The clubhouse was opened in July, 1976.

It did not take long before the 8 new courts could not cope with the demand and following further discussions with Council the Association made a further submission in January 1978 to implement Stage 2.

By the time the design and preparation of specifications and drawings had been submitted demand had again increased to such an extent that it was apparent Stages 2 and 3 should be constructed together. With Council approval, the specifications and drawings for Stage 2 were altered to incorporate Stage 3. This work completed in April, 1979. All work was completed by early April, 1980. No ceremony was arranged for the final completion of the Complex.

Hornsby Shire Council has given the Association generous assistance and co-operation in the building of the Tennis Complex at Pennant Hills Park and can be justly proud of the magnificent multipurpose sporting complex it has established in the area.

MAIN PLAYERS IN THE PROJECTS.

The Late Councillor Don Evans.

He was Hornsby Council President during the negotiations and construction of Pennant Hills Park Tennis Complex. His attitude to the Association was summed up in his well remembered phrase "I will help those who help themselves".

The Late Councillor Doris Munro.

Former member and Patron of E.T.D.T.A. and staunch supporter in Council meetings for recognition of the merits of the Association's application for approval of the Tennis Complex in Pennant Hills Park.

ASSOCIATION MEMBERS DIRECTLY INVOLVED IN THE PROJECTS:

Bruce Clarke, qualified Civil engineer, assisted with advice on court levels for Stage 1, and detailed design and estimates required by tenderers for earthworks for Stages 2 and 3.

Doug Blanchard, professionally qualified surveyor, drew up plans required for construction of Stage 1 and 2.

David Charles, then cadet Architect who provided the drawings and specifications detail for the 4 small clubhouses for Stages 2 and 3.

Jim Bonefin, professionally qualified Civil Engineer and former Secretary of the Association throughout the crucial years of negotiation for Council approval. Also reinforced the Association's technical dealings with Council Engineers.

Ted (Edward) Woods, professionally qualified Solicitor and former Secretary and President of the Association who provided much legal advice for Mobbs Hill Reserve, Santa Rosa Park and the early negotiations for Pennant Hills Park.

Tony (Anthony) Gilbert, professionally qualified Electrical Engineer and President of the Association from 1971 - 1974. Chief negotiator, designer and estimator for projects for the Tennis courts at Mobbs Lane Reserve, 265 Midson Road, Santa Rosa and Pennant Hills Park.

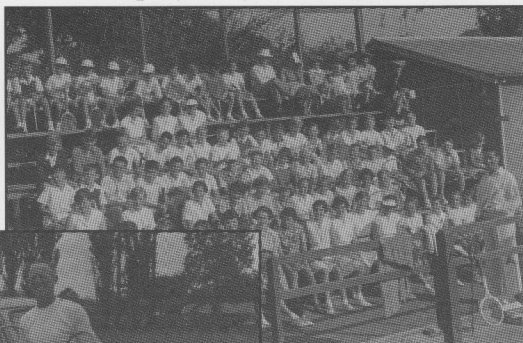
Other Association Members, there were many members, too numerous to mention, were indirectly involved in the court acquisition projects, particularly Pennant Hills Park and Kotara Park. There was also extra work handled by the Council of Management whose names are recorded in the minutes of meeting at that time. The Association was fortunate to have had a band of enthusiastic Social Committee members and volunteers who developed a strong determination to raise as much money as possible to ensure the Association was in a strong financial position during this period of time.



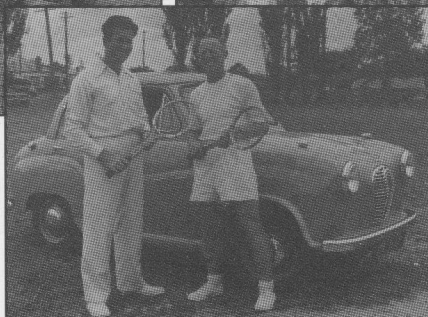
Night exhibition and satellite circuit tennis was held at Midson Road, featuring Australian and State ranked players. Coaching clinics were also held to raise money.



Mal Anderson,
Neil Fraser,
Roy Emmerson &
Ken Rosewall



Midson Road Coaching
Clinic with Don Coady,
Frank Stewart



The Association also organised a few formal dance evenings in the early 1970's. One of those worth special mention was the "Golden Jubilee Ball" this was held in April, 1974.

The Pacific Open which ran over the long weekend in October in 1982

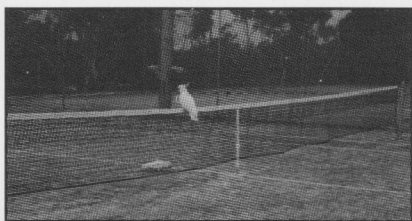


J. Jenkins, Miss Anne Minter Ladies
Champion & David Cropper

produced a fantastic weekend. The top 20 women players ranked in Australia at that stage except for Liz (Smiley) Sayers were present at Pennant Hills under the watchful eye of A.I.S. coaches. The mens Winner, Mark Kratzman had to defeat such names as Dick Crealy, John Marks (Aust. Open

Champion) and our own champions, Glen Hamilton, Jim Watts and John Eldridge. The comment from noted players **"This Association is the best kept secret in Sydney"**.

In 1996 an electric fence was installed on top of fencing to discourage Sulphur Crested Cockatoos from destroying synthetic grass



surfaces. Interesting quote at the time in the minutes "The Association and all other users and manufactures of synthetic grass court surfaces will have a major problem if these intelligent birds have realised they don't need to sit on the surrounding fencing before descending

onto the courts".

ABUKLEA ROAD

Abuklea Road Tennis Centre (Kotara Park) located at 87 Abuklea Road, Marsfield was opened in February 1981, with the first stage being courts (1-4) Laver, Sedgman, Hoad & Brooks and also including the main clubhouse. Stage 2 was opened one year later in February 1983 courts (5-8) Rosewall, Newcombe, M. Court & Cawley plus the two smaller

clubhouses. All courts were hardcourt surface.

Courts 3-4 were rotated 180 degrees in 1983 to be in alignment with the other courts. Courts 1-4 were laid with synthetic grass in 1983-1984, with the exception of court 8 (Cawley) which was kept as a hard court to allow wheel chair play. This court was laid with synthetic grass 1993. Following advice that wheel chairs would not damage grass.

Acknowledgments:

Special thanks must be given to the following E.T.D.T.A. members because without their support and generous donation of their time we wouldn't be able to produce this booklet, Mrs. Ann Buckley, Mrs. Clare Wagemans, Mrs. Barbara Rickards, Mr. Doug Blanchard and Mr. J. Eyles.

1999 OPEN DISTRICT CHAMPIONS



Open Mens Singles
Winner: Brendon Rose.
Runner Up: Matthew Thompson



Open Ladies Singles
Winner: Vanessa Krantz
Runner Up: Carmel Hill



Open Ladies Doubles
Winner:
Vanessa Kratz/Carmel Hill
Runner Up:
Kathy Eldridge/Elizabeth Nicholson



Open Mens Doubles
Winners:
Brendon Rose/Rod Niccol
Runners Up:
David Graingor/Seneka Subasinghe



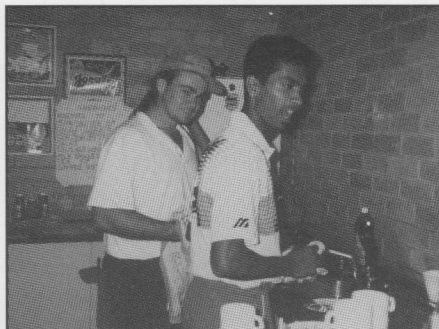
Open Mixed Doubles Winner:
Elizabeth Nicholson/Rod Niccol
Runner Up:
Matthew Thompson/Vanessa Kratz

DISTRICT CHAMPIONS:

1926 Mens Singles: H. L. Tuckerman	1955 Mens Singles: S. Hicks	1974 Mens Singles: J. Watts	1987 Mens Singles: P. Toohey
1927 Mens Singles: H. Learoyd	1956 Mens Singles: S. Hicks	Ladies Singles: Mrs. J. Hicks	Ladies Singles: Miss K. Gay
1928 Mens Singles: K. Enderby	1957 Mens Singles: S. Hicks	1975 Mens Singles: J. Eldridge	1988 Mens Singles: R. Gilbert
1929-30 Mens Singles: No Play	1958 Mens Singles: S. Hicks	Ladies Singles: Mrs. E. Craig	Ladies Singles: Miss K. Deed
1931 Mens Singles: R. Englis	1959 Mens Singles: J. Jenkins	1976 Mens Singles: M. Eyeington	1989 Mens Singles: J. Holmes
1932 Mens Singles: H. Learoyd	1960 Mens Singles: J. Jenkins	Ladies Singles: Mrs. E. Craig	Ladies Singles: Miss K. Gay
1933 Mens Singles: S. Bellamy	1961 Mens Singles: J. Jenkins	1977 Mens Singles: S. Hicks	1990 Mens Singles: R. Gilbert
1934 Mens Singles: S. Bellamy	1962 Mens Singles: S. Hicks	Ladies Singles: Mrs. E. Craig	Ladies Singles: Miss K. Gay
1935 Mens Singles: S. Bellamy	1963 Mens Singles: S. Hicks	1978 Mens Singles: J. Watts	1991 Mens Singles: S. So
1936 Mens Singles: S. Bellamy	1964 Mens Singles: S. Hicks	Ladies Singles: Mrs. E. Craig	Ladies Singles: Miss E. Nicholson
1937 Mens Singles: S. Bellamy	1965 Mens Singles: S. Hicks	1979 Mens Singles: J. Watts	1992 Mens Singles: G. Husband
1938 Mens Singles: S. Bellamy	1966 Mens Singles: S. Hicks	Ladies Singles: Mrs. E. Craig	Ladies Singles: Miss E. Nicholson
1939 Mens Singles: S. Bellamy	1967 Mens Singles: D. Keys	1980 Mens Singles: J. Eldridge	1993 Mens Singles: B. Rose
1940 Mens Singles: S. Bellamy	Ladies Singles: Mrs. J. Hicks	Ladies Singles: Mrs. E. Craig	Ladies Singles: Miss E. Nicholson
1941 Mens Singles: R. Howe	1968 Mens Singles: D. Keys	1981 Mens Singles: G. Hamilton	1994 Mens Singles: G. Husband
1942-45 Mens Singles: World War II	Ladies Singles: Mrs. M. Gilbert	Ladies Singles: Mrs. E. Craig	Ladies Singles: Miss K. Eldridge
1946 Mens Singles: R. Howe	1969 Mens Singles: D. Keys	1982 Mens Singles: J. Watts	1995 Mens Singles: B. Rose
1947 Mens Singles: R. Howe	Ladies Singles: Not played	Ladies Singles: Miss V. Marler	Ladies Singles: Miss J. Beard
1948 Mens Singles: R. Howe	1970 Mens Singles: A. Gilbert	1983 Mens Singles: G. Hamilton	1996 Mens Singles: P. Sommerfield
1949 Mens Singles: F.V. Toohey	Ladies Singles: Mrs. D. Martin	Ladies Singles: Miss V. Marler	Ladies Singles: Miss J. Brew
1950 Mens Singles: F.V. Toohey	1971 Mens Singles: S. Hicks	1984 Mens Singles: G. Hamilton	1997 Mens Singles: I. Renton
1951 Mens Singles: F.V. Toohey	Ladies Singles: Mrs. M. Gilbert	Ladies Singles: Miss J. Hoare	Ladies Singles: Miss N. Buckley
1952 Mens Singles: R. T. Floyd	1972 Mens Singles: S. Hicks	1985 Mens Singles: G. Hamilton	1998 Mens Singles: S. Subasinghe
1953 Mens Singles: R. F. Jones	Ladies Singles: Mrs. J. Hicks	Ladies Singles: Miss K. Gay	Ladies Singles: Mrs. S. Kavanagh
1954 Mens Singles: R. F. Jones	1973 Mens Singles: J. Eldridge	1986 Mens Singles: W. Fowler	1999 Mens Singles: B. Rose
	Ladies Singles: Mrs. J. Hicks	Ladies Singles: Miss K. Gay	Ladies Singles: Miss V. Krantz



As described in the Local Newspaper -
 "Lovely Legs"
 M. Willard, M. Sky, S. Hicks &
 Johnny Jenkins "The Footy Show starters"



Helpers are always welcome



Paul McNamee - OZ Tennis



B. Grozier, H. Bryant, N. Buckley, J. Delacour
 "We must support our Juniors"



The Famous Beer Tent with J. Books and
 W. Fowler



Mrs. A. Johnson, A. Eyles & M. Books

Can you name these players!

